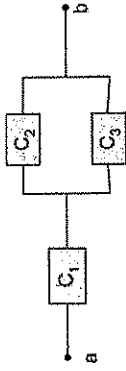
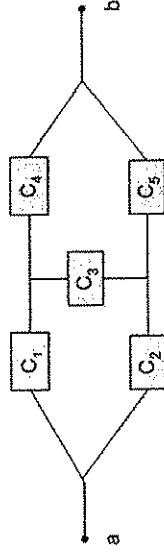


Hands-On Problems

- Find the minimal path-sets, and minimal cut-sets for the following systems:
- RBD-Ex1:



- RBD-Ex2: a bridge structure



Lecture #12

① path sets: $P_1 = \{C_1, C_2\}$ $P_2 = \{C_1, C_3\}$

cut sets: $\{C_1\}, \{C_2, C_3\}$

② path sets: $\{C_1, C_4\}$ $\{C_1, C_3, C_5\}$

$\{C_2, C_5\}$ $\{C_2, C_3, C_4\}$

cut sets: $\{C_1, C_2\}$ $\{C_1, C_3, C_5\}$

$\{C_4, C_5\}, \{C_2, C_3, C_4\}$