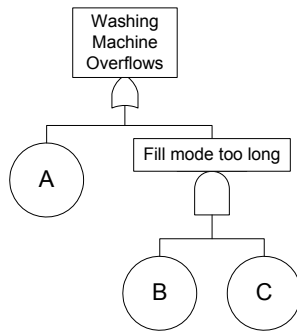


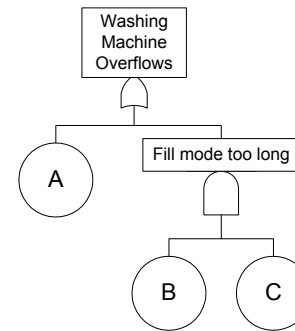
I/E Method: Example



- $F = A + BC$
- Suppose
 - $\Pr\{A\} = 0.01$
 - $\Pr\{B\} = 0.05$
 - $\Pr\{C\} = 0.075$
 and that all failures are s-independent

$$\begin{aligned}
 \Pr\{F\} &= \Pr\{A + BC\} \\
 &= \Pr\{A\} + \Pr\{BC\} - \Pr\{ABC\} \\
 &= 0.01 + 0.00375 - 0.0000375 \\
 &= 0.0137125
 \end{aligned}$$

SDP Method: Example



- $F = A + BC$
- Suppose
 - $\Pr\{A\} = 0.01$
 - $\Pr\{B\} = 0.05$
 - $\Pr\{C\} = 0.075$
 and that all failures are s-independent

$$\begin{aligned}
 \Pr\{F\} &= \Pr\{A + BC\} \\
 &= \Pr\{A\} + \Pr\{\bar{A}BC\} \\
 &= 0.01 + 0.99 \cdot 0.05 \cdot 0.075 \\
 &= 0.0137125
 \end{aligned}$$